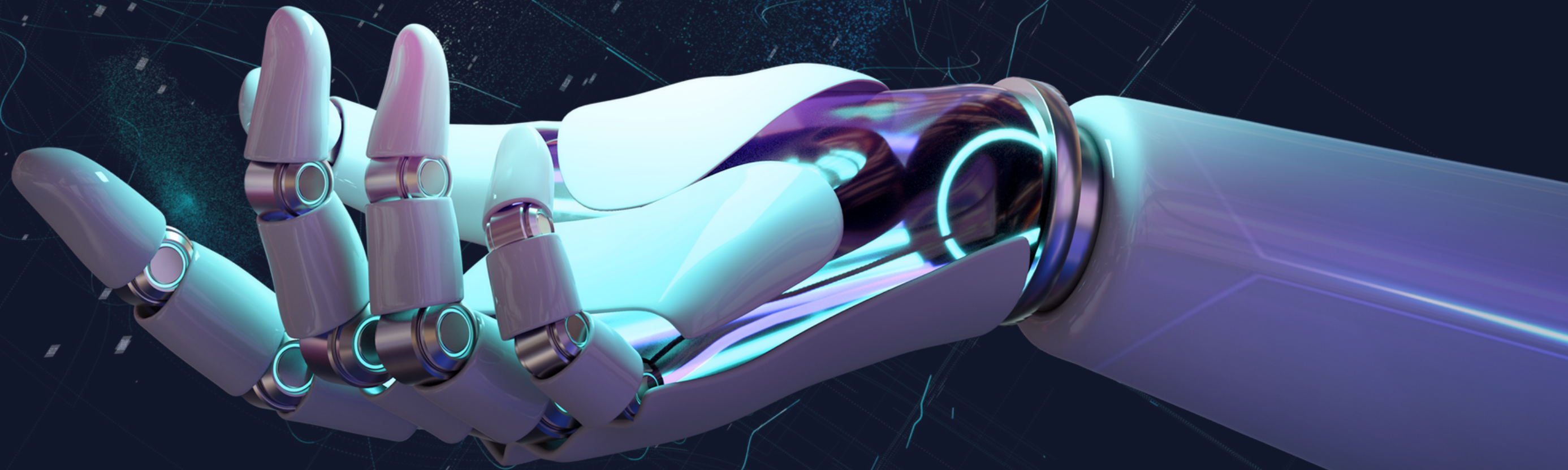


ROBY

CHATBOT



The speakers

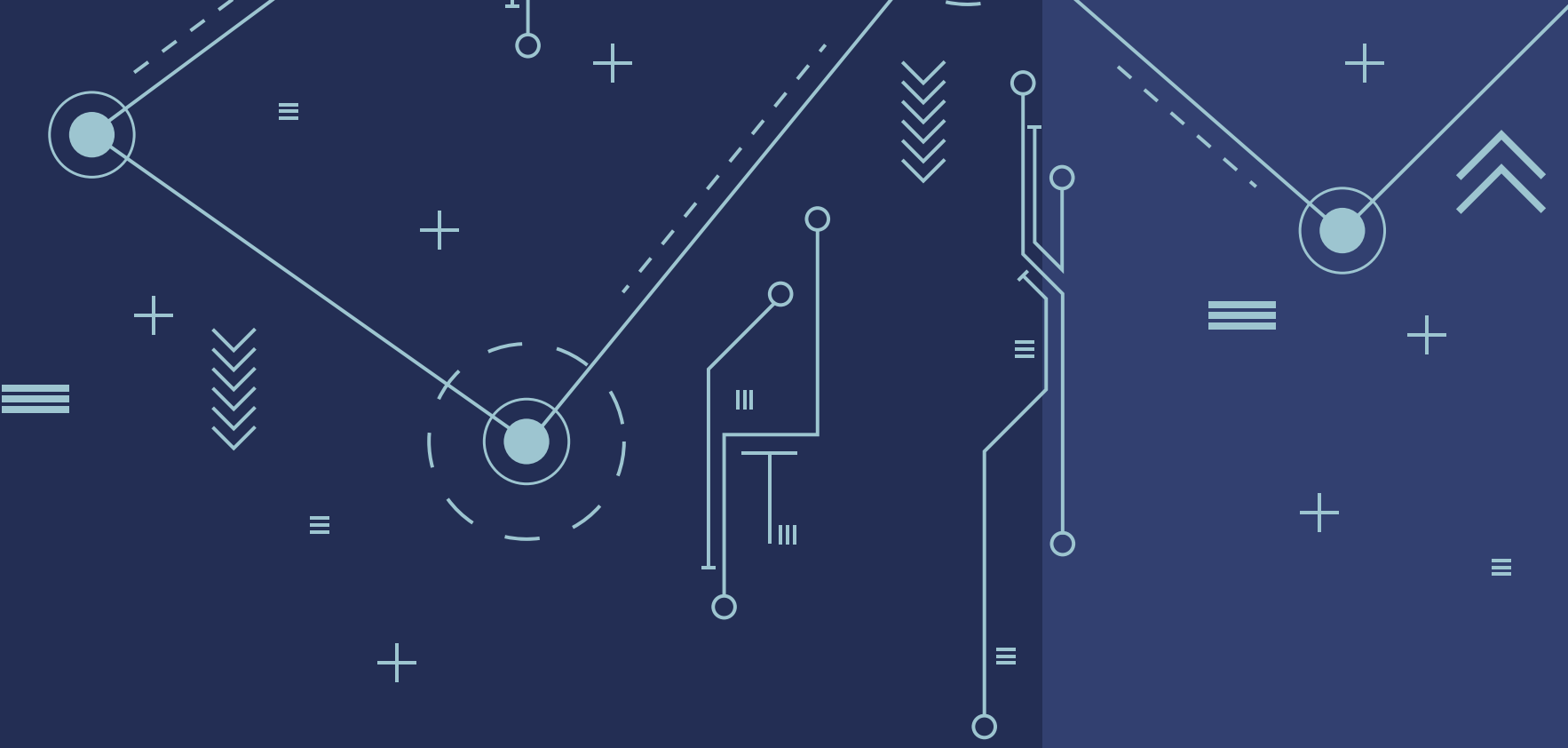


 **Yousef Hamed**



 **Rawan Soliman**

Presentation for Machine Learning (AIE 121)
supervised by
Dr. Ahmed Emam
Eng. Ismail Ahmed



What is the Chatbot?



It is AI operated software acts as a virtual assistant that can understand and respond to user queries, simulating natural human-like conversation.



- Customer Support
- E-commerce
- Information Retrieval

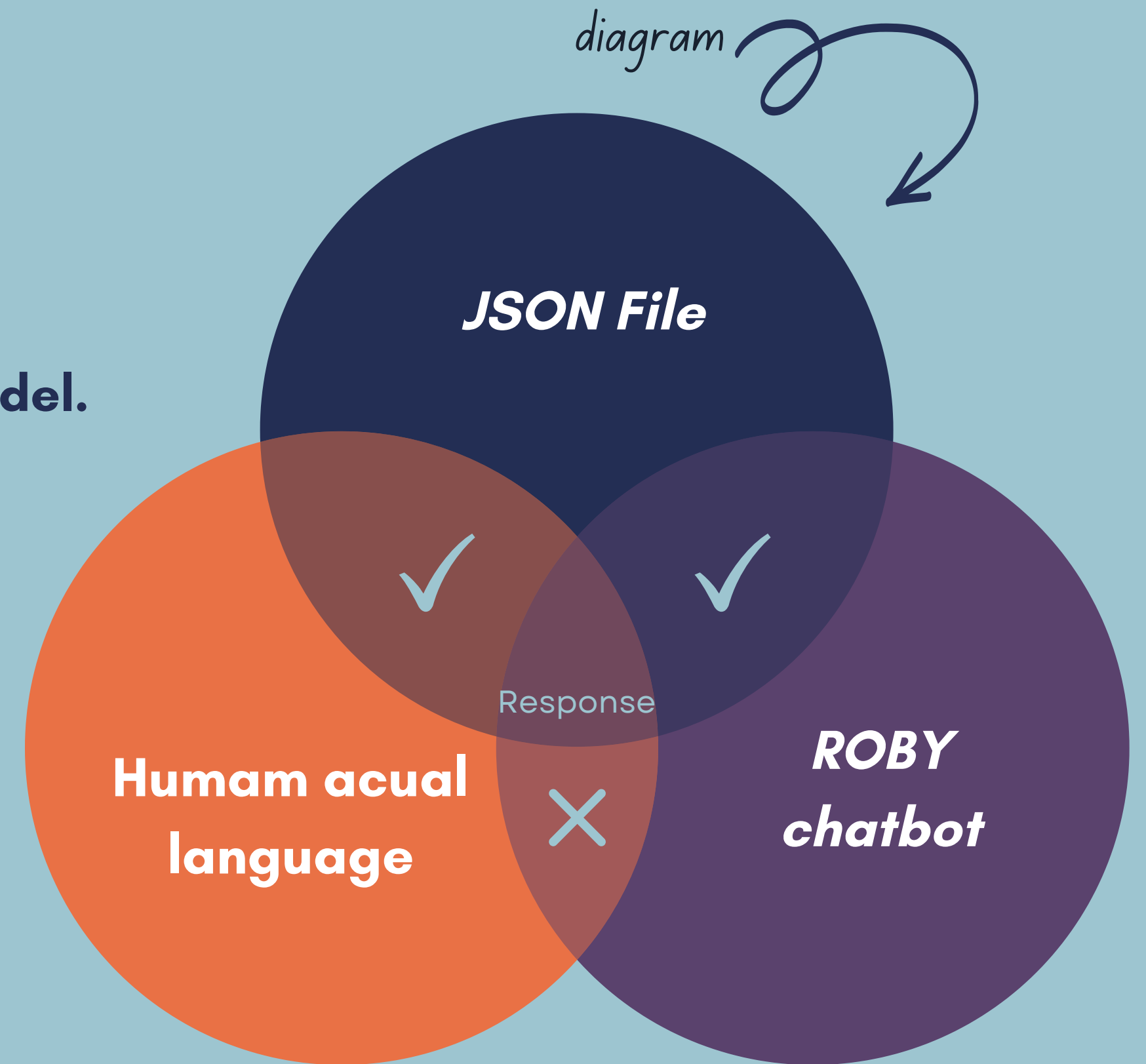
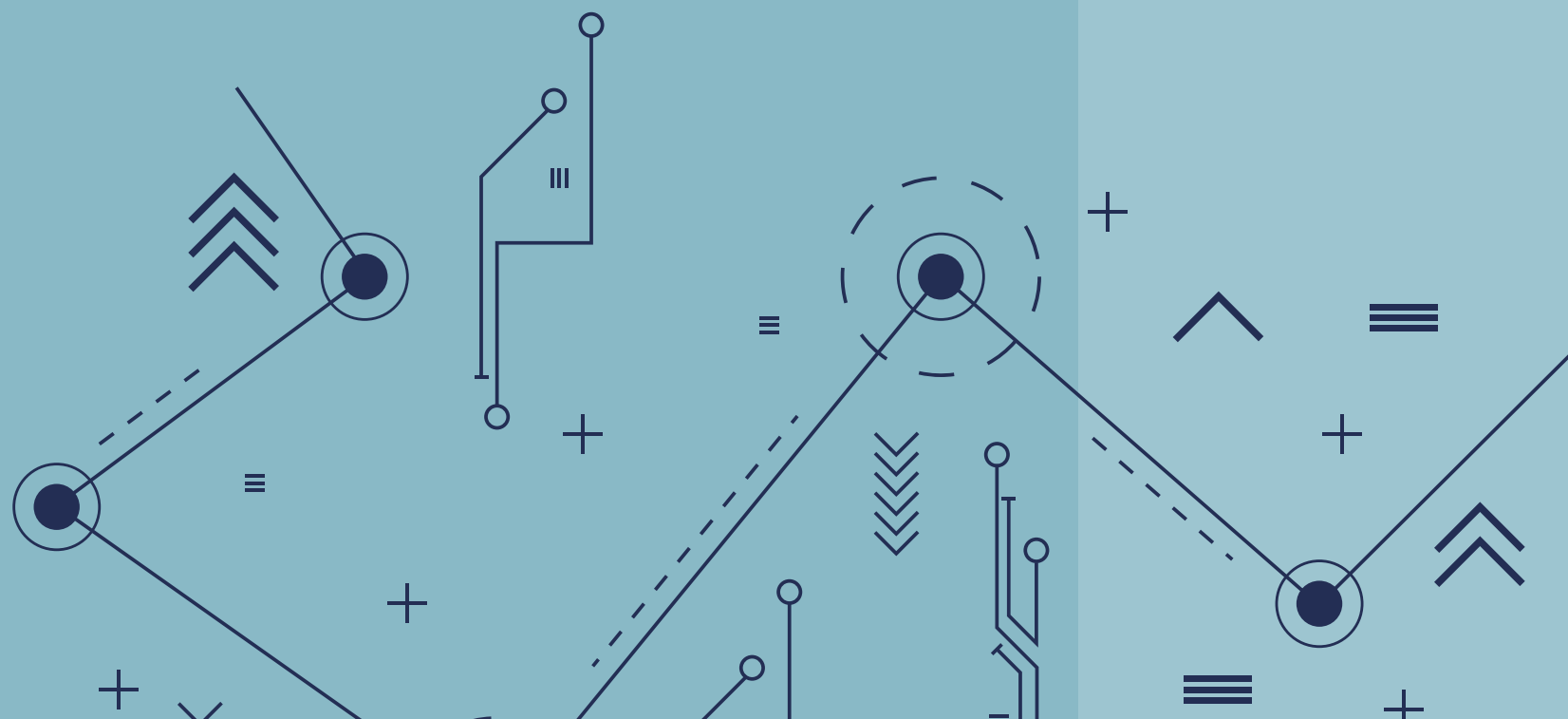


Yousef Hamed
1st speaker

**Introduction &
JSON file & GUI**

JSON File in ROBY Development

- What is JSON
- JSON Function
- Training and fine-tuning the chatbot's NLP model.
- It enables :
 - Collaborative development
 - Version control
 - Reuse of chatbot components.



Tkinter(GUI) in Python



- Easy Integration
- Rich Widget Library
- Cross-Platform Compatibility
- Simple and Intuitive Design



Rawan Soliman

2nd speaker

roby's capabilities

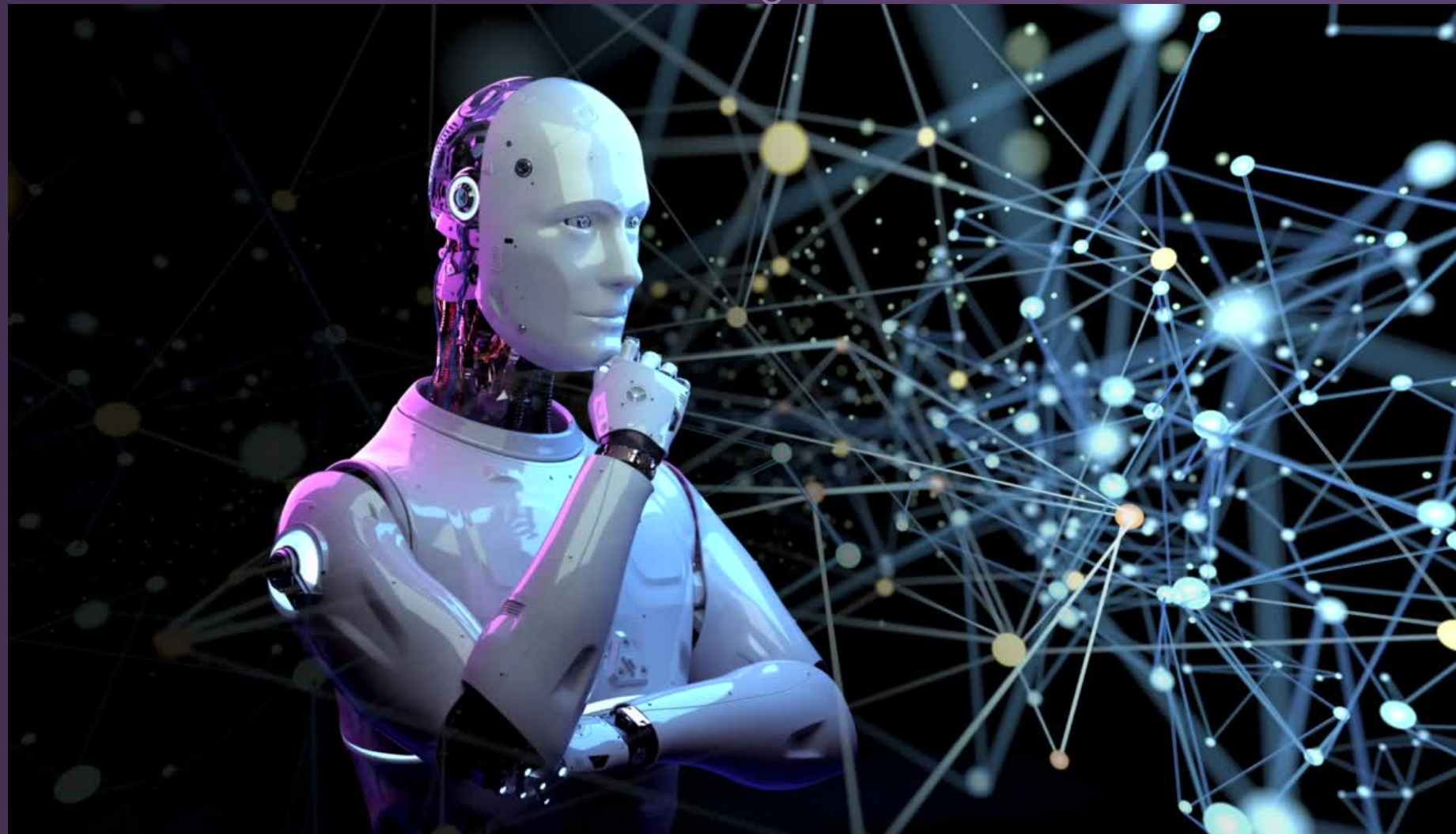
What ROBY can do?

It is a dialogue chatbot, which has capabilities of :

- It can tell a jokes or riddles!
- It can tell you the time, date and weather today.
- It can get you the top 10 trending news in Egypt.
- It can help you get the best songs or films or even games.
- It can suggest you a trip in Egypt.
- It can help you get the best (laptop/mobile/cpu/gpu).
- It have a little knowledge about football and some cars.
- It can help you choose something you eat and help you cooking
- It can have enough knowledge about computer science
- It may help you if you are depressed or bored or ill
- It have general knowledge about continents and countries
- It have a build in calculator

Stemming Model for ROBY:

- Improved Language Understanding
- Increased Vocabulary Coverage
- Enhanced Response Generation



Future of Chatbots



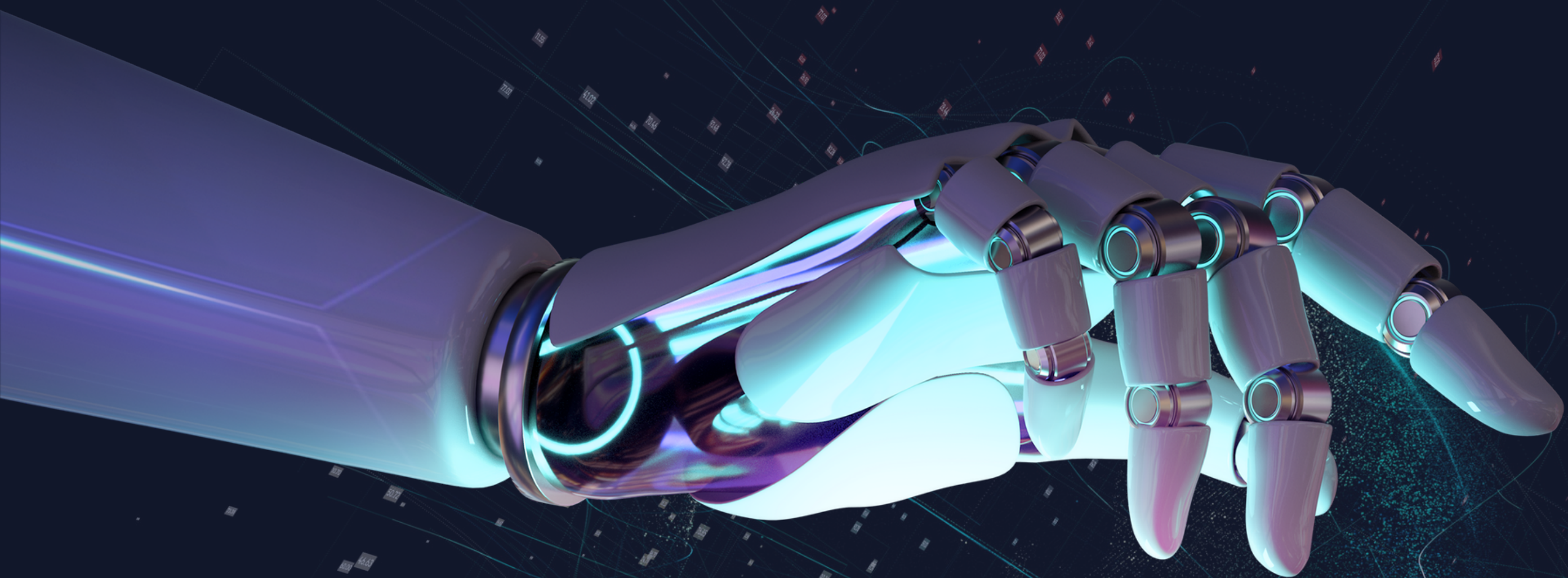
Enhanced Language Understanding



Personalized and Context-Aware Interactions



Integration with Emerging Technologies



Any Questions

ASK ROBY !!