

134.2K Animal Tag FDX-B ISO11784 Reader Module

Parameter:

Model	WL-134
Dimension	35 x 36mm
Frequency	AM 134.2K
Voltage	9V battery or LDO power supply. DC-DC or switching power supply will affect the reading distance
Working current	140mA, 9V
Working temperature	-40° c ~ +80° c
Default antenna inductance	580uH

Pin definitions are as follows:

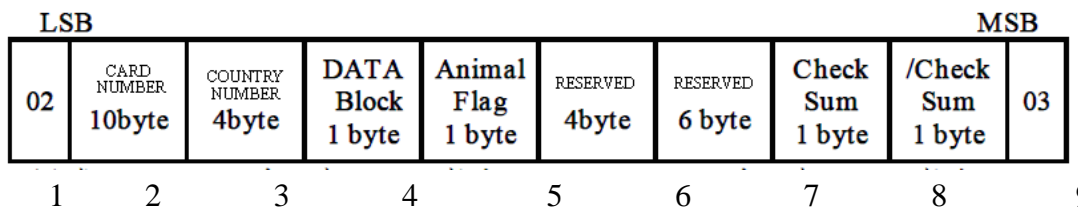
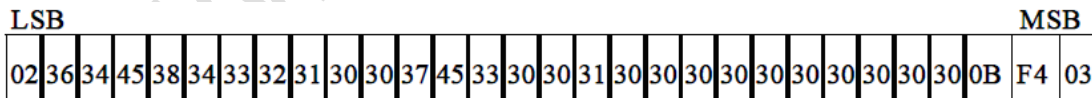
1	+9 V
2	RST reset,Low Level effective
3	TX (serial port number output, TTL 5V level)
4	GND
L1	Antenna 1
L2	Antenna 2(340V vpp)

Read card distance reference list:

Use length 97 x 97mm square antenna reading card distance are as follows
2x12mm glass tube is about 18CM
The diameter of 3CM ear tag reading distance is about 36CM

TX Data format: (ASCII):

Baud rate 9600, 8N2



10

- 1: 02 start number (fixed)
- 2: 10 bit HEX format ASCII card number, LSB first.
- 3: 4 bit HEX format ASCII country number, LSB first:
- 4: Data flag, 0 or 1
- 5: Animal flag, 0 or 1
- 6: reserved.

- 7: reserved.
- 8: Checksum, all 26bit ACSII HEX XOR。
- 9: Checksum Bitwise invert.
- 10: 03 end number (fixed)

For example: on the tag shows: “900250000023921” (Dec format 900 in the front, then card number 250000023921)

Module output:

02 31 37 31 41 39 32 35 33 41 33 34 38 33 30 30 31 30 30 30 30 30 30 30
30 07 F8 03

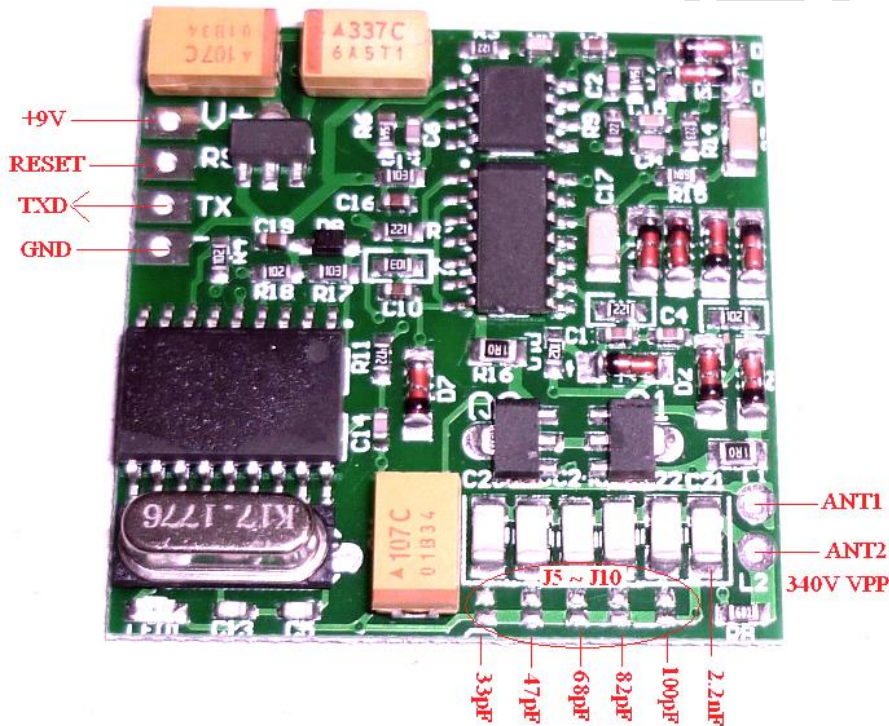
Equal ASCII: 171A9253A34830010000000000 ?

We can find card number is 171A9253A3, country number is 483 (LSB First)

Translate these number to Dec format, card number equal: 250000023921 ,

Country number equal 900

And “31 37 31 41 39 32 35 33 41 33 34 38 33 30 30 31 30 30 30 30 30 30 30 30 30 30” made all XOR caculate, we got the answer is 07 (check sum result) . F8 is 07’s bitwise invert result.



You can ADJUST J5 ~ J10 config, to get best antenna performance.
If you must use AC power supply, please use transformer power supply and RC filter to get pure power.