

# ODM Quality Report

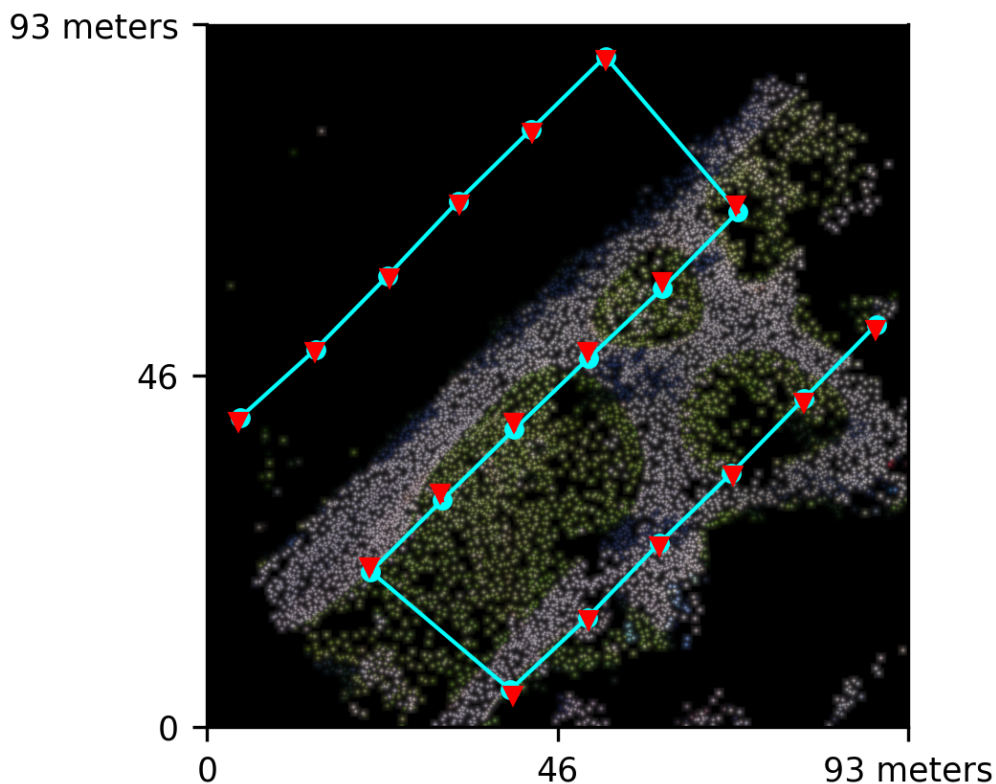
Processed with ODM version 3.5.3

## Dataset Summary

Date	16/07/2024 at 19:32:36
Area Covered	0.007052 km <sup>2</sup>
Processing Time	2.0m:13.0s
Capture Start	23/06/2016 at 16:31:59
Capture End	23/06/2016 at 16:34:03

## Processing Summary

Reconstructed Images	18 over 18 shots (100.0%)
Reconstructed Points (Sparse)	11324 over 11508 points (98.4%)
Reconstructed Points (Dense)	1,495,230 points
Average Ground Sampling Distance (GSD)	1.6 cm
Detected Features	8,381 features
Reconstructed Features	2,112 features
Geographic Reference	GPS
GPS errors	0.69 meters

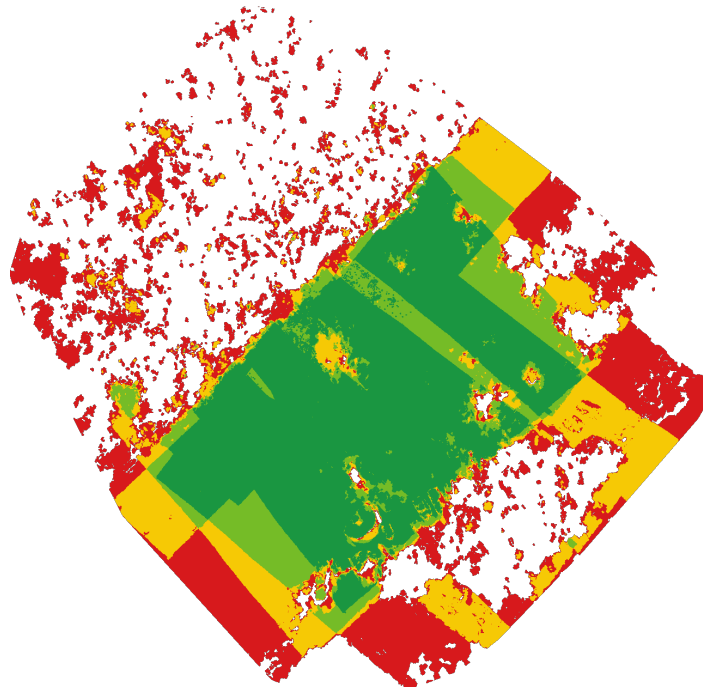


# Previews



Orthophoto

# Survey Data



■ 2 ■ 3 ■ 4 ■ 5+

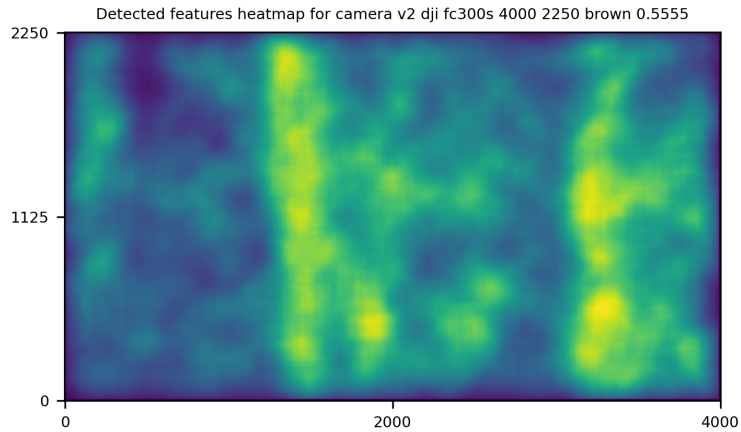
## GPS/GCP/3D Errors Details

GPS	Mean	Standard Deviation	RMS Error
X Error (meters)	-0.010	0.161	0.161
Y Error (meters)	-0.011	0.611	0.612
Z Error (meters)	0.018	0.376	0.376
Total			0.687

3D	Mean	Standard Deviation	RMS Error
X Error (meters)	0.011	0.011	0.016
Y Error (meters)	0.011	0.012	0.016
Z Error (meters)	0.016	0.026	0.031
Total			0.024

	Absolute	Relative
Horizontal Accuracy CE90 (meters)	0.915	0.033
Vertical Accuracy LE90 (meters)	0.574	0.038

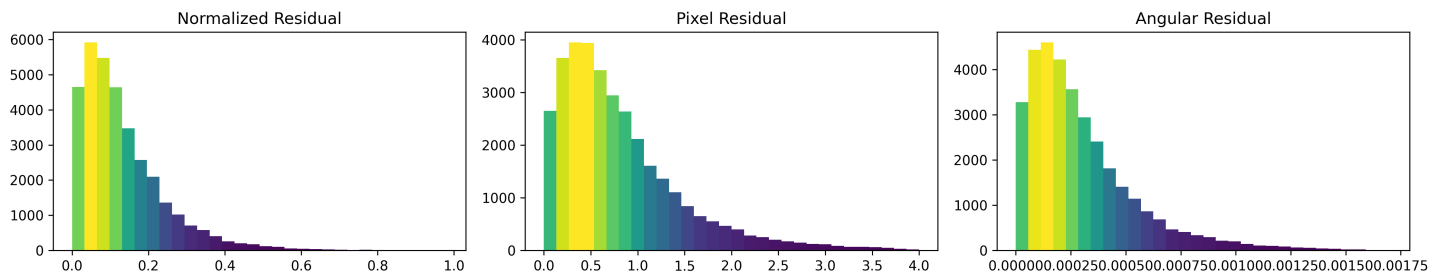
# Features Details



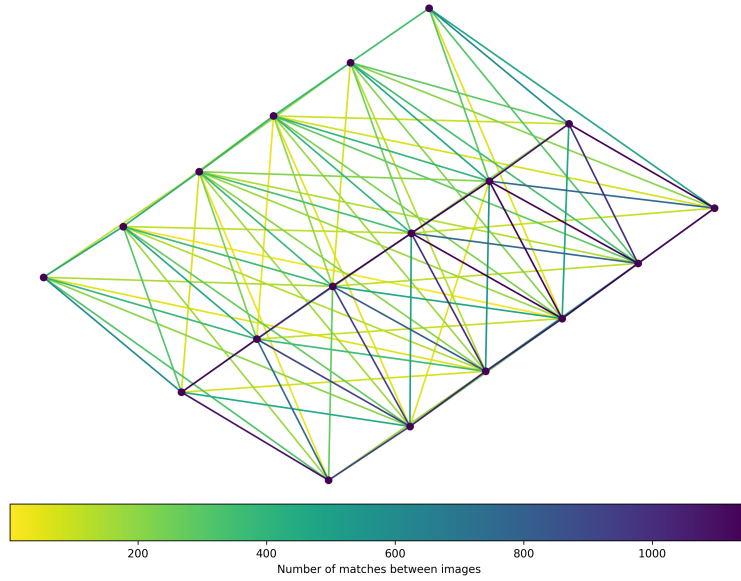
	Min.	Max.	Mean	Median
Detected	6539	9270	8323	8381
Reconstructed	808	3401	1913	2112

# Reconstruction Details

Average Reprojection Error (normalized / pixels / angular)	0.13 / 0.81 / 0.00030
Average Track Length	3.04 images
Average Track Length (> 2)	4.07 images



# Tracks Details



Length	2	3	4	5	6	7	8	9	10
Count	5635	2448	1518	1016	397	205	88	15	1

# Camera Models Details

**v2 dji fc300s 4000 2250 brown 0.5555**

	k1	k2	k3	p1	p2	focal	aspect_ratio	cx	cy
Initial	0.0000	0.0000	0.0000	0.0000	0.0000	0.5556	1.0000	0.0000	0.0000
Optimized	0.0159	0.0046	0.0079	-0.0007	0.0025	0.5591	1.0000	-0.0059	0.0079

