

ODM Quality Report

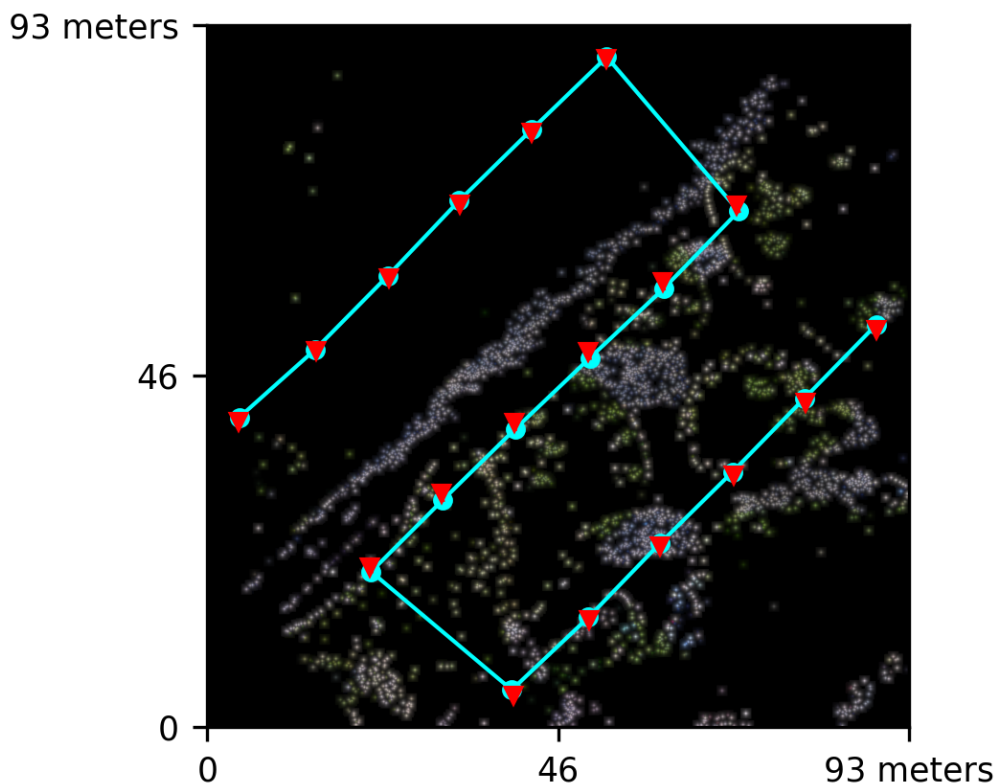
Processed with ODM version 3.5.3

Dataset Summary

Date	16/07/2024 at 19:51:36
Area Covered	0.007058 km ²
Processing Time	1.0m:58.0s
Capture Start	23/06/2016 at 16:31:59
Capture End	23/06/2016 at 16:34:03

Processing Summary

Reconstructed Images	18 over 18 shots (100.0%)
Reconstructed Points (Sparse)	7502 over 7696 points (97.5%)
Reconstructed Points (Dense)	1,439,979 points
Average Ground Sampling Distance (GSD)	1.6 cm
Detected Features	14,667 features
Reconstructed Features	1,192 features
Geographic Reference	GPS
GPS errors	0.64 meters

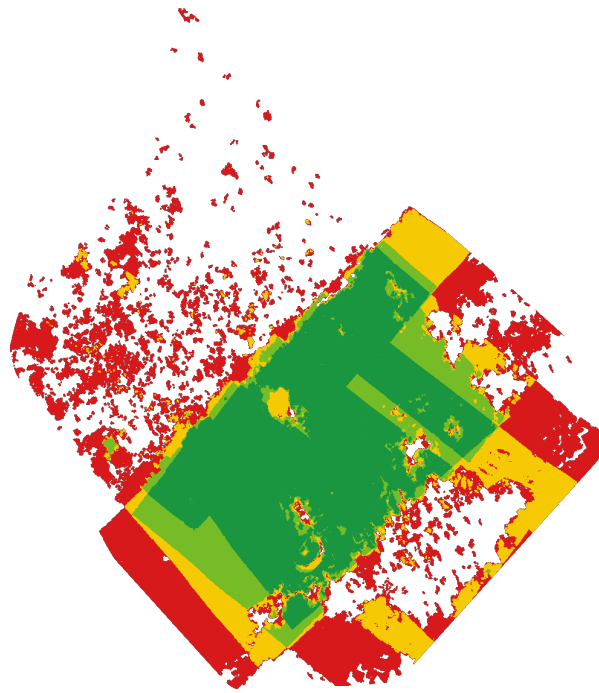


Previews



Orthophoto

Survey Data



■ 2
 ■ 3
 ■ 4
 ■ 5+

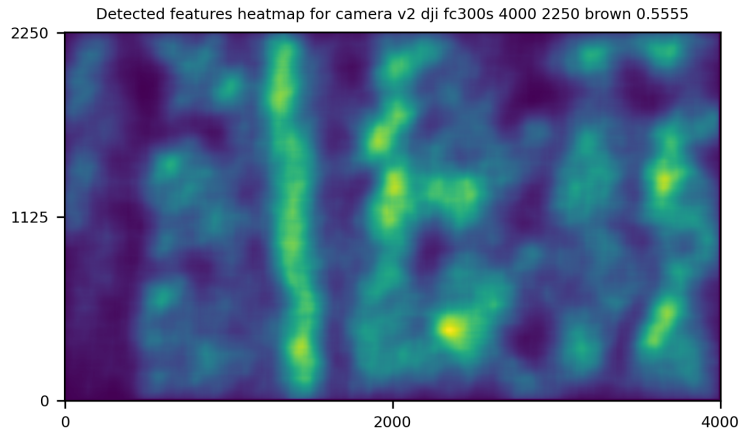
GPS/GCP/3D Errors Details

GPS	Mean	Standard Deviation	RMS Error
X Error (meters)	0.005	0.135	0.135
Y Error (meters)	0.007	0.616	0.616
Z Error (meters)	0.001	0.264	0.264
Total			0.644

3D	Mean	Standard Deviation	RMS Error
X Error (meters)	0.007	0.007	0.010
Y Error (meters)	0.007	0.008	0.011
Z Error (meters)	0.011	0.014	0.018
Total			0.016

	Absolute	Relative
Horizontal Accuracy CE90 (meters)	0.891	0.020
Vertical Accuracy LE90 (meters)	0.410	0.026

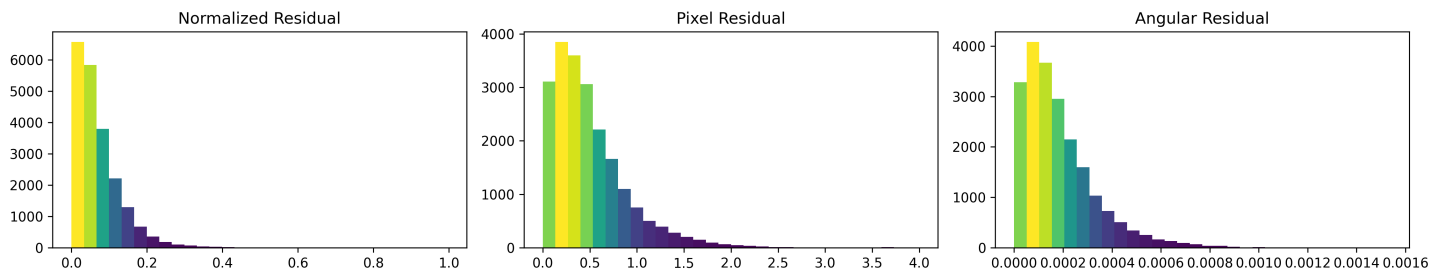
Features Details



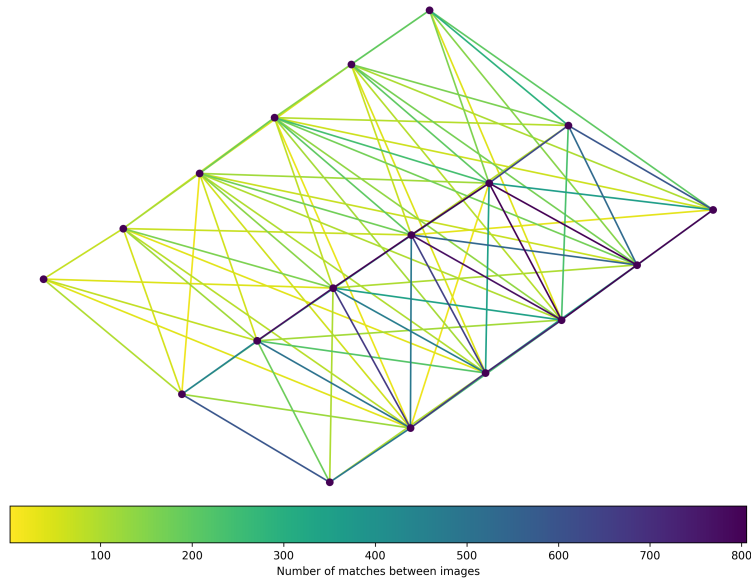
	Min.	Max.	Mean	Median
Detected	10591	15001	13685	14667
Reconstructed	152	2255	1183	1192

Reconstruction Details

Average Reprojection Error (normalized / pixels / angular)	0.07 / 0.50 / 0.00019
Average Track Length	2.84 images
Average Track Length (> 2)	3.91 images



Tracks Details



Length	2	3	4	5	6	7	8	9
Count	4203	1636	813	514	221	86	24	5

Camera Models Details

v2 dji fc300s 4000 2250 brown 0.5555

	k1	k2	k3	p1	p2	focal	aspect_ratio	cx	cy
Initial	0.0000	0.0000	0.0000	0.0000	0.0000	0.5556	1.0000	0.0000	0.0000
Optimized	0.0064	0.0067	0.0058	0.0011	0.0016	0.5577	1.0000	-0.0048	0.0069

