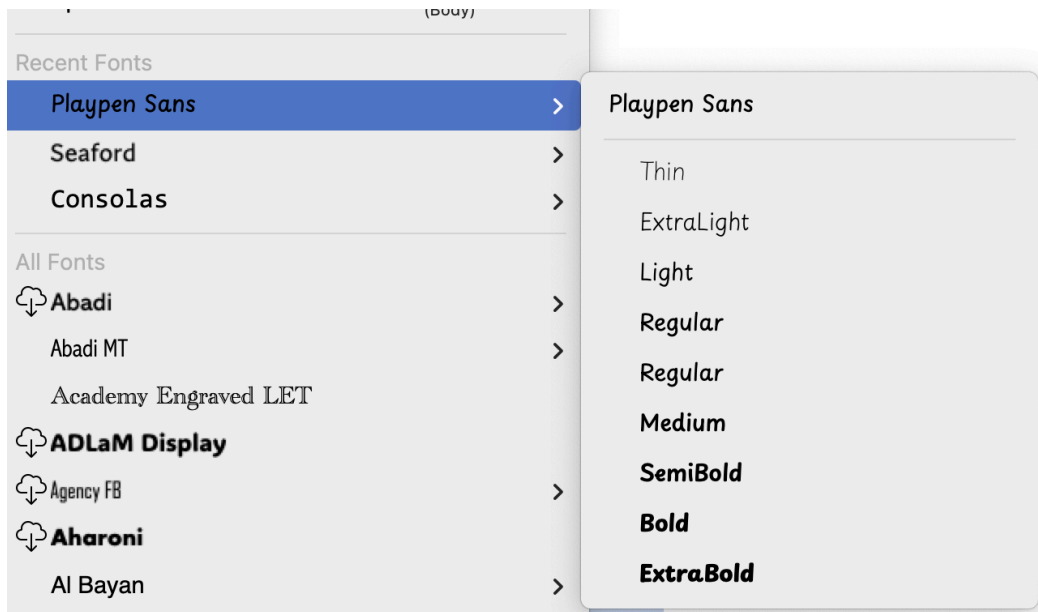


#PlaypenSans_GRK_feedback

General comments

The font in the menu of Word shows two Regular styles.



Another general note, maybe it's a type design note, is the width of upsilon and lambda. I think there are a touch too wide and they can be a bit distracting, especially in the heavier styles. Especially lambda with its backwards writing direction, creates a very strange counter shape.

υ γ η τ ρ θ η υ π μ

υψηλότητα

υψηλότητα

υψηλότητα

υψηλότητα

υψηλότητα

υγητθησπμ

Regular

Diacritical marks

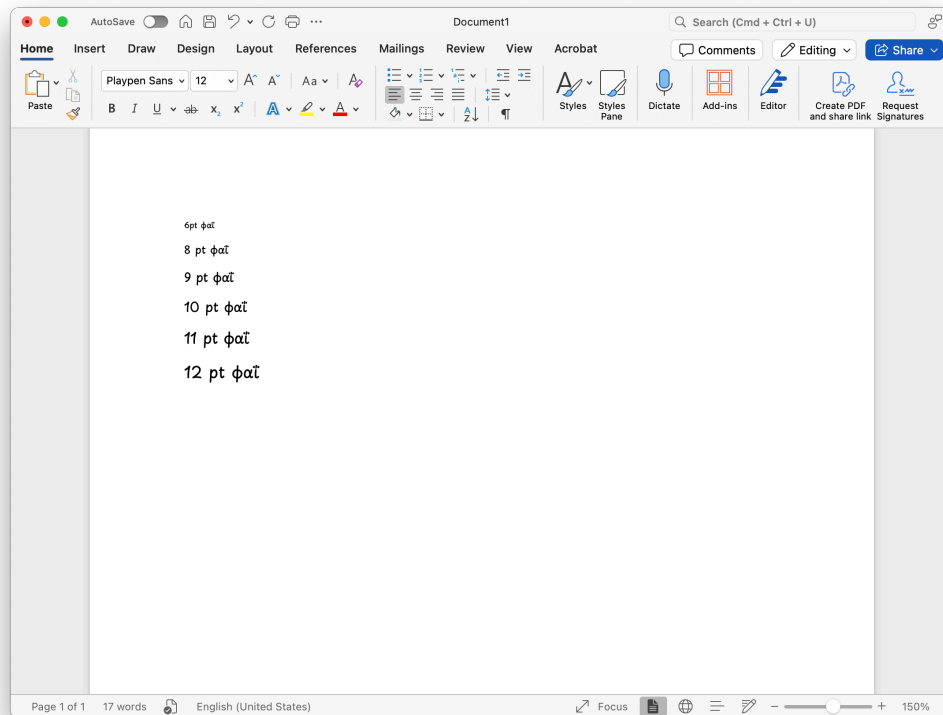
- tonos in etatonos is a bit too much to the right

σήψη

- tonos in uppercase accented letters has different distances from the base letter. i.e. in Alphanos is too far, in Epsilontonos is too close.

Ά Έ Η Ί Ό Υ Ω

- dieresistonos seems a bit unreadable in smaller sizes. Here is a screenshot of 150% zoom in Word, which I think is close to actual size in a 27-inch (5120 × 2880) screen.



Lowercase

- distance between round shapes like theta/omicron and rho/omicron is a bit too loose. See it in comparison with similar shapes in Latin p/o.

θρου ρου ερθουν

- distance between tau and round characters is large

ΤΑΤΟΤΕΤΙΤΥΤΩ

tatotetitu

πατάτες στις άτοπες

ατέρμονες στυφές πίτσες

- distance between mu and various lower case is large. Pairs shown in the example are mu/alpha, mu/beta, mu/delta, mu/omicron, mu/sigma, mu/tau, mu/chi, mu/psi and mu/omega

αμάξι αμβέρσα λάμδα αμνησία

ομογένεια χαμσίν τζαμτζής Καμχής

γαμψός -κομώ

- distance between zeta and various lower case is large. Pairs shown in the example are zeta/eta, zeta/nu, zeta/omicron, zeta/tau, zeta/upsilon and zeta/omega

έζησε μπίζνα όζον ζτάνης ζύμη ζώο

- distance between gamma and lambda is large

άγῆυκος

- zeta and xi seem to float inside the text, here is a these two letters between the rest of the lowercase.

ξαξβξγξδξεξζξηξθξιξκξλξμξνξξπξοξρξσξτξυξφξχξψξωξς

ζαζβζγζδζεζζηζθζιζκζλζμζνζξζοζρζσζτζυζφζχζψζωζς

Uppercase

- Distance between Gamma and some lower case is large. In this sample Gamma/nu, Gamma/iota, Gamma/rho, Gamma/omega.

Γνάθος

Γιρῆάντα

Γρυῆίζω

Γωνία

- Accented uppercase with symbols (various examples)

[' A [' E [' H [' I [' O [' Y [' Ω

* ' A * ' E * ' H * ' I * ' O * ' Y * ' Ω

/ ' A / ' E / ' H / ' I / ' O / ' Y / ' Ω /

“ ' A “ ' E “ ' H “ ' I “ ' O “ ' Y “ ' Ω “

« ' A « ' E « ' H « ' I « ' O « ' Y « ' Ω

ExtraBold

Uppercase+lowercase

- quote a few spacing/kerning issues

ΑΦΓΑΝΙΣΤΑΝ

ΚΑΡΑΦΛΑ

ΠΑΤΟΥΣΑ

ΣΓΟΥΡΟΣ

ΑΛΦΑ

ΑΛΜΥΡΑ

ΣΙΓΑ

ΕΓΔΥΣΕ

Ταψιά

Τραύμα

αχλάδι

αμάξωμα

ξανά

απα ατα